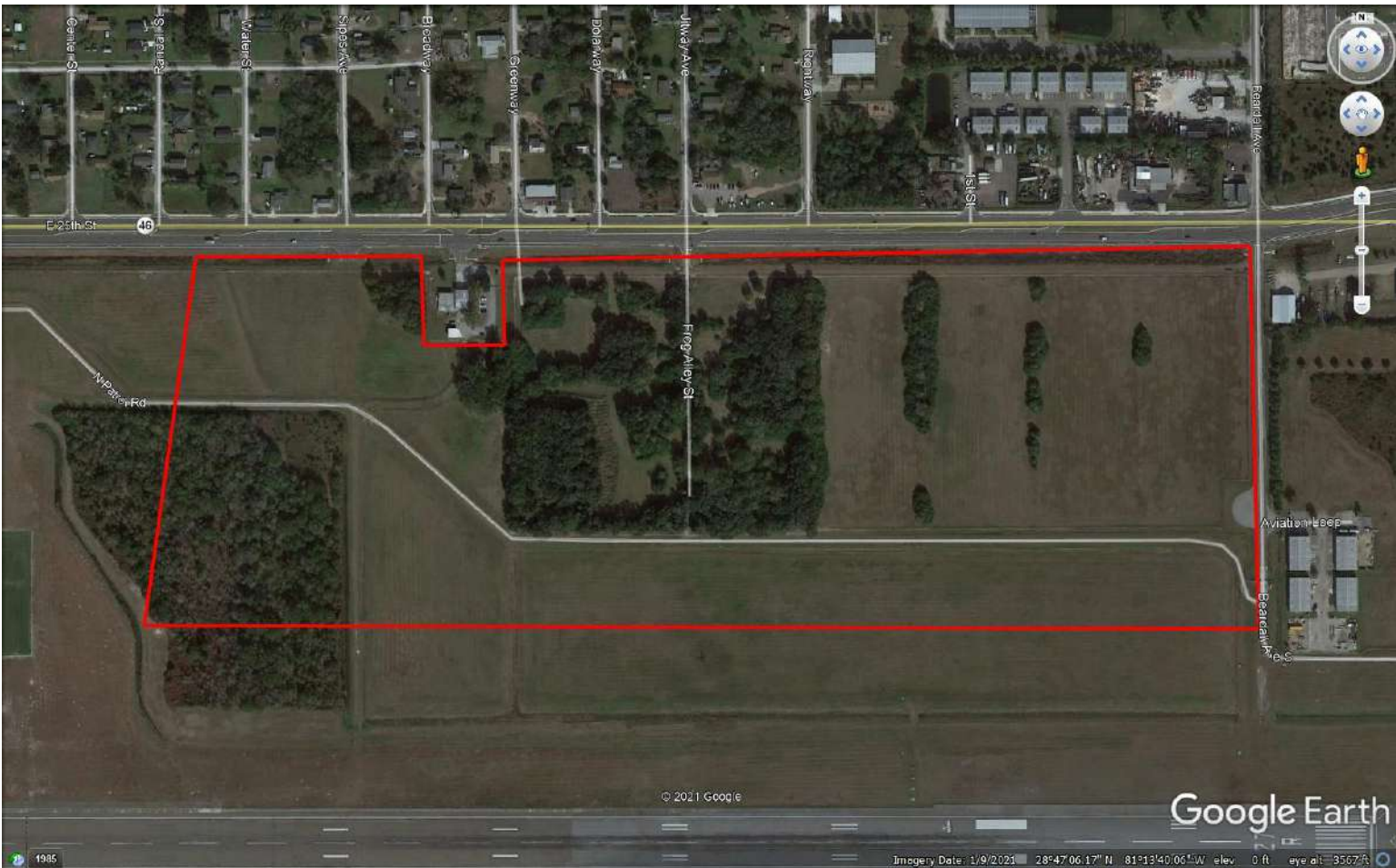


Orlando Sanford International Airport

80 Acres with SR 46 Frontage



RI1 – Light Industrial - Can be subdivided

This 80-acre parcel is located at the northeast quadrant of the Orlando Sanford International Airport (SFB). Zoned RI1 (light industrial) with a future land use designation of AIC, (airport industry & commerce) it is perfectly positioned for aviation and aerospace companies. It enjoys 5,900 feet of frontage on the recently four-laned State Road 46. There are no known environmental or architectural issues on the property. A Seminole County Fire Station is adjacent to the parcel and a Florida Power & Light electrical sub-station is less than 1,300 feet to the east. A CSX rail spur is located 1.5 miles to the west at the west boundary of the airport. All utilities are in the SR-46 right of way, utility contacts will be provided upon request. The site is in flood zone X, outside any area of flooding.

SFB has four runways with plenty of expansion capacity. It has excellent access to SR-417 and I-4 which connect with SR-408, I-75, I-95, and Florida's turnpike.



Contact
Al Nygren
Property Manager
407.585.4061
anygren@osaa.net