



# **SANFORD AIRPORT AUTHORITY**

## **VENDOR OUTREACH FAIR**

**Orlando Sanford International Airport  
1200 Red Cleveland Blvd.  
Sanford, FL 32773**

**Baggage Claim Areas 6 - 8**

**Tuesday, September 23, 2025**

**9:00 a.m. – 12:00 p.m.**

Interested in doing business with local government? Join us for our annual vendor outreach fair and speak directly with procurement and various departments from the Sanford Airport Authority, as well as procurement representatives from other Seminole County Government Agencies including the City of Sanford, Seminole County, Seminole County Public Schools, and City of Longwood. Learn about upcoming projects, connect with industry professionals, and discover opportunities through the Disadvantaged Business Enterprise (DBE) and Airport Concession Disadvantaged Business Enterprise (ACDBE) programs.

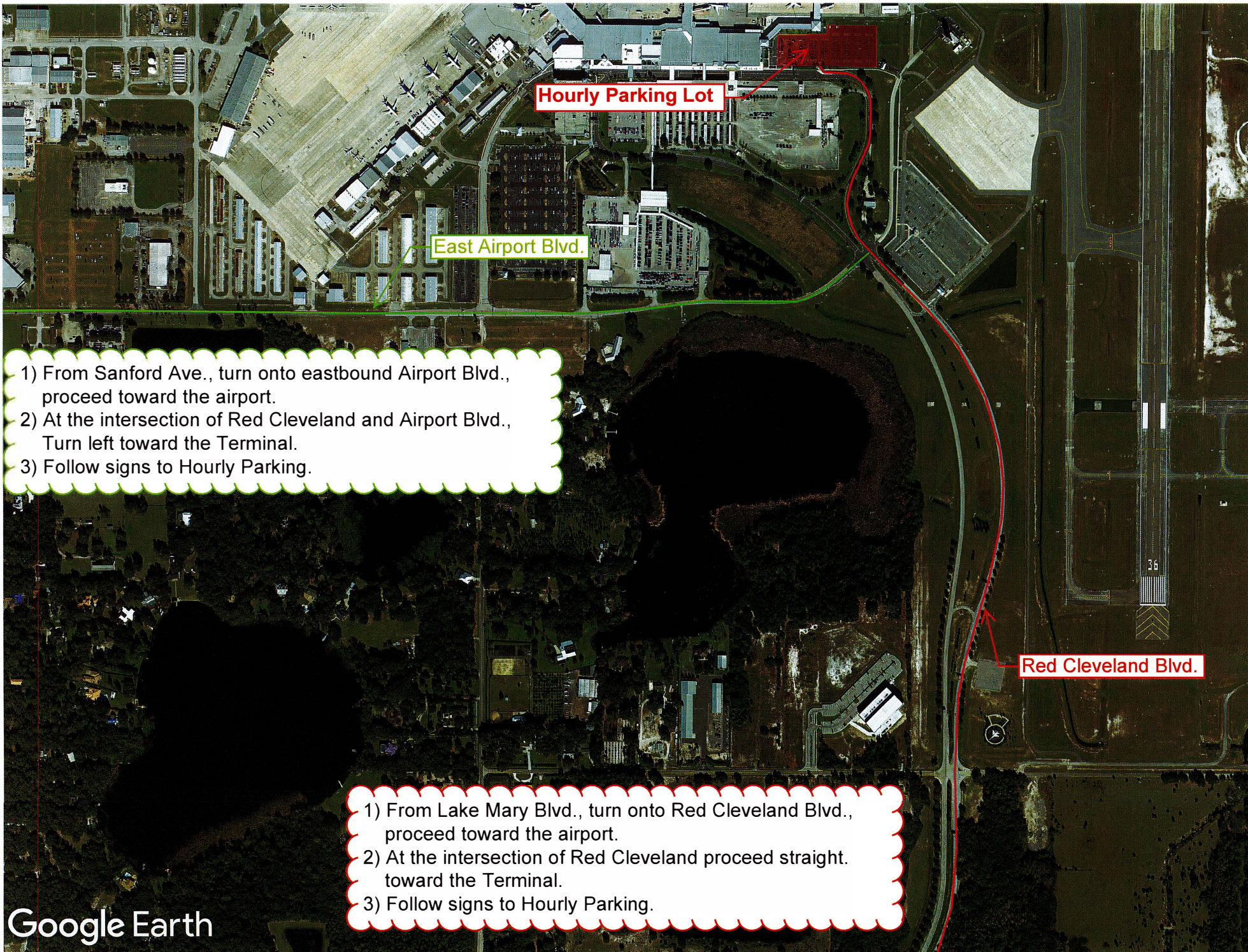
### **Who should attend?**

Prime & Subcontractors  
Vendors & Suppliers  
Small Business Owners  
Service Providers  
Consultants & Professionals  
DBE/ACDBE-Certified Businesses

**Parking:** See attached map for parking directions to the Hourly Parking Lot. Vouchers will be provided for attendees.

***Network***  ***Build***  ***Grow***





- 1) From Sanford Ave., turn onto eastbound Airport Blvd., proceed toward the airport.
- 2) At the intersection of Red Cleveland and Airport Blvd., Turn left toward the Terminal.
- 3) Follow signs to Hourly Parking.

- 1) From Lake Mary Blvd., turn onto Red Cleveland Blvd., proceed toward the airport.
- 2) At the intersection of Red Cleveland proceed straight. toward the Terminal.
- 3) Follow signs to Hourly Parking.



